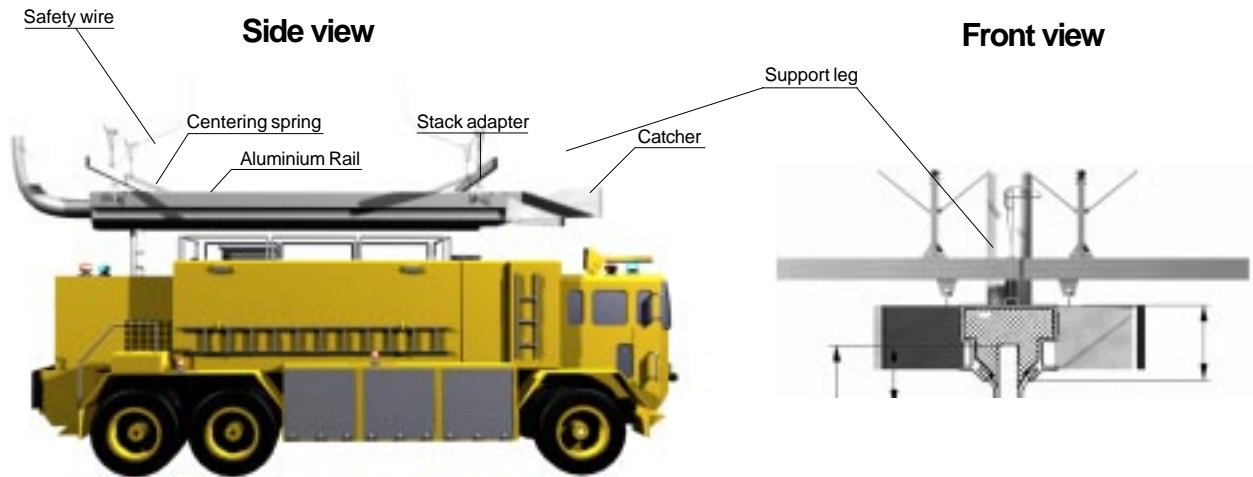


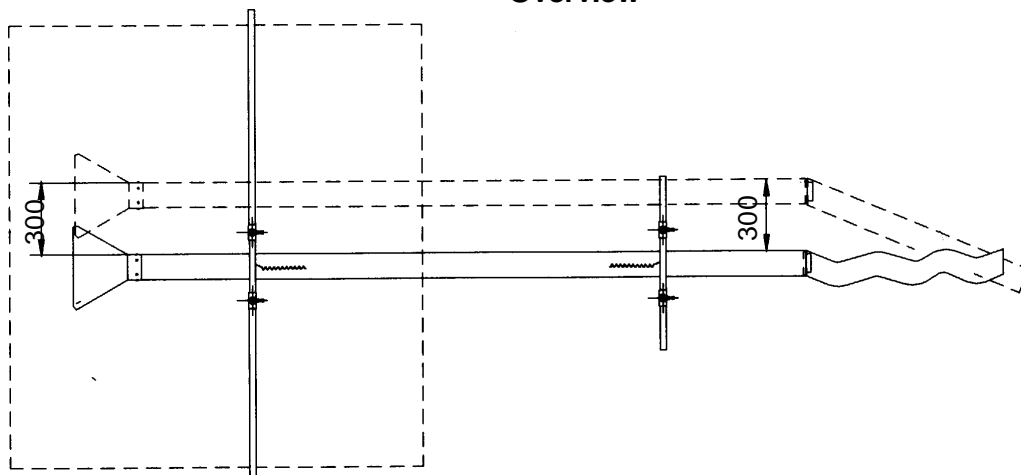
AIRUM - Bologna - t 051/60 25 072 - SCHEDA TECNICA canalina VSR

The VSR System consists of a strong rectangular aluminium profile with a section area of 280 cm². The underside of the rail is an open area sealed with rubber lips. The profile is hung in two (2) bearing loaded trolleys at each support. The profile is connected to the ducts system by a 160 mm flexible hose. The front opening of the profile has a V formed catcher to accommodate the stack adapter, mounted on the vertical exhaust pipe. The exhaust cone converts the round shape of the exhaust pipe to be flat without changing the section area. As the returning fire engine drives in to the station the catcher and the profile align themselves to the exhaust pipe position.

This movement is created via the bearing loaded runners sliding in the C profile of the support leg. The C-profile hangs in two adjustable vertical legs mounted to the general roof structure. The support legs allow the VSR to have a lateral movement from two separate points of 300 mm to either side. As the fire engine drives out of the station the exhaust pipe slides along the profile, between the rubber lips, up to the point the vehicle drives out of the station. A spring is connected between the support legs C-profile and aluminium profile to move the rail into its central rest position. The VSR System is equipped with safety wires capable of carrying the complete system.



Overview



Advantages

- 300 mm lateral movement to either side.
- Flexible duct connection.
- Sealing rubber lips; negative pressure.
- Automatic return to position after lateral movement.
- A fully automatic system.
- Security wire, fail safe.
- Adjustable support legs.
- Expandable system to almost any length.
- Stack adapter designed for both empty and loaded vehicles.
- Suitable for existing fire stations and new design build stations.